



OVER 60?

Secure this property
for up to **59% less!**

Price

£375,000

Freehold

3x  1x  1x 

**Windmill Heights,
Billericay, Essex, CM12**



**DOUGLAS
ALLEN**

Helping you move forwards



Main features

- Beautifully presented 3 bedroom semi-detached house
- Solar panels for reduced electricity costs
- Open plan ground floor living accommodation
- Modern kitchen
- Ground floor cloakroom
- Detached garage and off street parking

Accommodation

GROUND FLOOR

Entrance Porch
Hallway
Lounge: 14'7 x 11'6 (4.45m x 3.51m)
Dining Area: 14'11 x 9'11 (4.55m x 3.02m)
Kitchen: 14'5 x 7'5 (4.40m x 2.26m)
Cloakroom: 4'11 x 2'11 (1.50m x 0.89m)

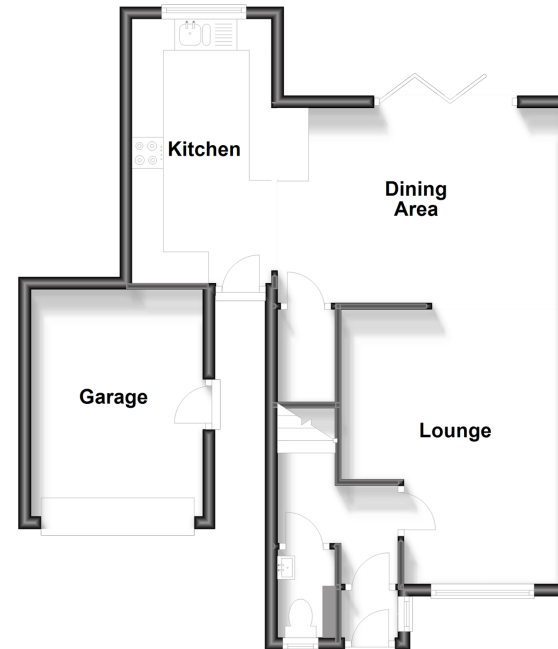
FIRST FLOOR

Landing
Bedroom 1: 13'4 x 8'3 (4.07m x 2.52m)
Bedroom 2: 9'8 x 8'3 (2.95m x 2.52m)
Bedroom 3: 10'2 x 6'2 (3.10m x 1.88m)
Bathroom: 6'1 x 5'8 (1.86m x 1.73m)

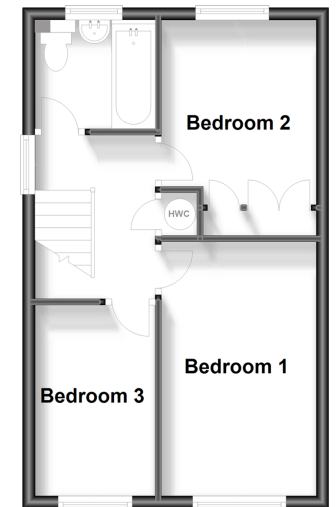
OUTSIDE

Off Street Parking
Garage
Front & Rear Garden

Ground Floor
Approx. 45.9 sq. metres (493.9 sq. feet)



First Floor
Approx. 34.5 sq. metres (371.4 sq. feet)



Call Billericay - 01277 631377 ■ douglasallen.co.uk

- Legal advice should be taken to verify fixtures/fittings, planning, alterations and/or lease details
- Through a Homewise Home For Life Plan people aged 60+ can secure this property for up to 59% less, by purchasing a Lifetime Lease.

- Appliances & services are untested, dimensions are approximate and floor plans are not to scale



50313052/20231202/RP/CB