



Price
£475,000

Freehold

4x  1x  2x 

**Allens Road, Ramsden
Heath, Billericay, Essex,
CM11**

OVER 60?

Secure this property
for up to **59% less!**



Video Tour available



**DOUGLAS
ALLEN**

Helping you move forwards



Main features

- Large property situated on a corner plot
- In need of modernisation in some places
- All rooms are of a generous size
- This lovely home has potential to put your own stamp on
- Village location yet not too far from amenities

Accommodation

GROUND FLOOR

Entrance Hall
 Lounge/Dining Area: 24'4 x 10'7 (7.42m x 3.23m)
 Kitchen: 19'1 x 11'0 (5.82m x 3.36m)
 Study: 10'8 x 7'8 (3.25m x 2.34m)
 Shower Room: 5'10 x 4'4 (1.78m x 1.32m)

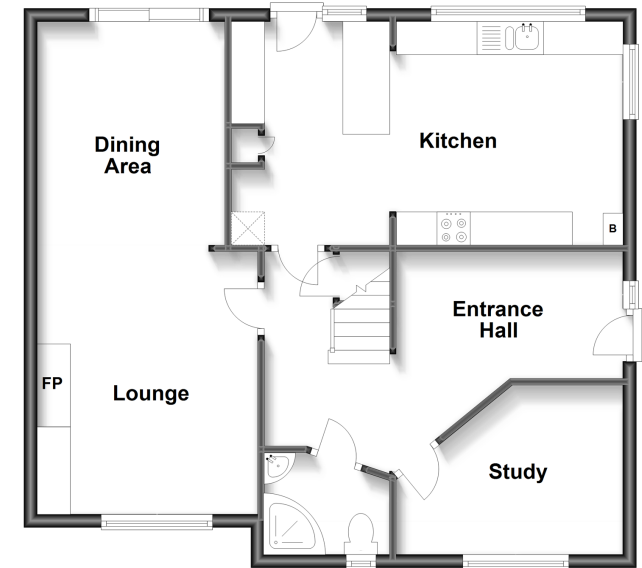
FIRST FLOOR

Landing
 Bedroom One: 17'9 x 11'4 (5.41m x 3.46m)
 Dressing Area: 9'2 x 6'3 (2.80m x 1.91m)
 Bedroom Two: 12'9 x 10'3 (3.89m x 3.13m)
 Bedroom Three: 9'4 x 9'3 (2.85m x 2.82m)
 Bedroom Four: 9'4 x 6'5 (2.85m x 1.96m)
 Bathroom: 7'4 x 6'1 (2.24m x 1.86m)

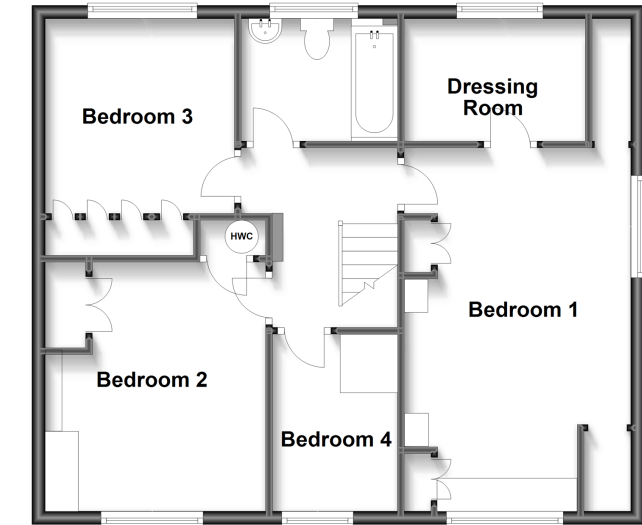
OUTSIDE

Rear Garden
 Garage

Ground Floor
 Approx. 68.7 sq. metres (740.0 sq. feet)



First Floor
 Approx. 65.5 sq. metres (704.8 sq. feet)



Call Billericay - 01277 631377 ■ douglasallen.co.uk

- Legal advice should be taken to verify fixtures/fittings, planning, alterations and/or lease details
- Appliances & services are untested, dimensions are approximate and floor plans are not to scale
- Through a Homewise Home For Life Plan people aged 60+ can secure this property for up to 59% less, by purchasing a Lifetime Lease.



50313008/20230729/RP/DP