



**Price**

**£170,000**

**Leasehold**

1x  1x  1x 

**Allington Court,  
Outwood Common  
Road, Billericay, Essex,  
CM11**





## Main features

- Situated in the sought after retirement development of Allington Court
- Located within easy access to local shops
- Excellent bus links to Billericay and Basildon Town Centres
- Benefits from a modern shower room and new carpets
- Overlooks the well looked after communal gardens
- Communal facilities include laundry room, communal lounge, communal gardens, residents and visitors parking

## Accommodation

### FIRST FLOOR

Entrance Hall

Lounge/Diner: 12'7 x 11'2 (3.84m x 3.41m)

Kitchen: 9'3 x 8'0 (2.82m x 2.44m)

Bedroom: 12'7 x 8'10 (3.84m x 2.69m)

Shower Room: 7'0 x 5'7 (2.14m x 1.70m)

### COMMUNAL FACILITIES

Communal Lounge

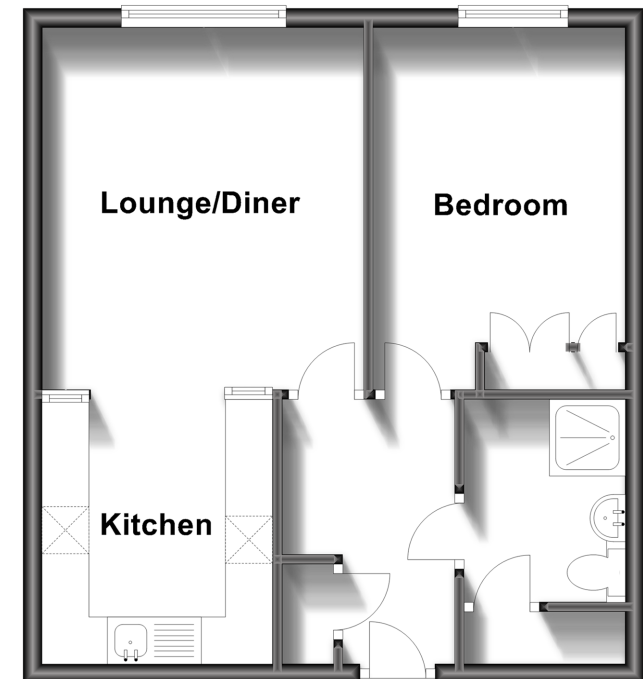
Laundry Room

Residents Parking

Communal Gardens

## First Floor

Approx. 41.9 sq. metres (450.9 sq. feet)



Call Billericay - 01277 631377 ■ [douglasallen.co.uk](http://douglasallen.co.uk)

■ Legal advice should be taken to verify fixtures/fittings, planning, alterations and/or lease details

■ Appliances & services are untested, dimensions are approximate and floor plans are not to scale

