



Price
£560,000

Freehold

4x  1x  2x 

**Highfield Road,
Billericay, Essex, CM11**

OVER 60?

You could get up to
59% off the price!*

 **DOUGLAS
ALLEN**
Helping you move forwards



Main features

- Sought after bungalow which has been extended into loft
- Driveway and detached garage
- Situated in a quite cul de sac
- Lovely views over farmland to rear of property
- Within catchment for local desirable schools

Accommodation

GROUND FLOOR

Hallway

Cloakroom: 4'4 x 2'7 (1.32m x 0.79m)

Lounge: 14'10 x 13'2 (4.52m x 4.02m)

Kitchen: 14'11 x 7'11 (4.55m x 2.41m)

Conservatory: 21'8 x 8'8 (6.61m x 2.64m)

Bedroom Three: 13'1 x 9'10 (3.99m x 3.00m)

Bedroom Four: 8'2 x 6'9 (2.49m x 2.06m)

FIRST FLOOR

Landing

Bedroom One: 14'4 x 13'3 (4.37m x 4.04m)

Bedroom Two: 13'5 x 9'5 (4.09m x 2.87m)

Bathroom: 10'4 x 6'7 (3.15m x 2.01m)

OUTSIDE

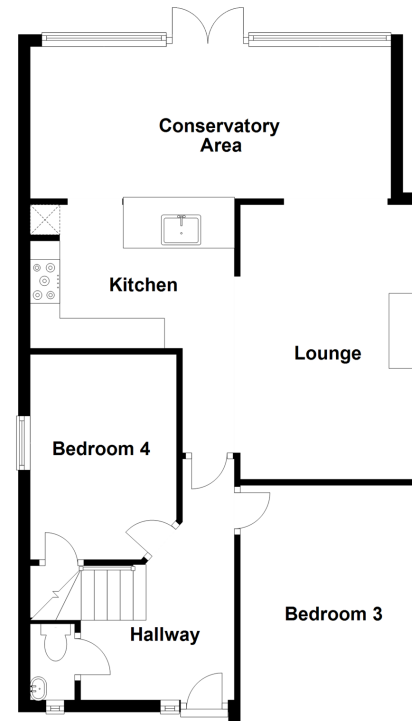
Detached Garage

Driveway

Rear Garden

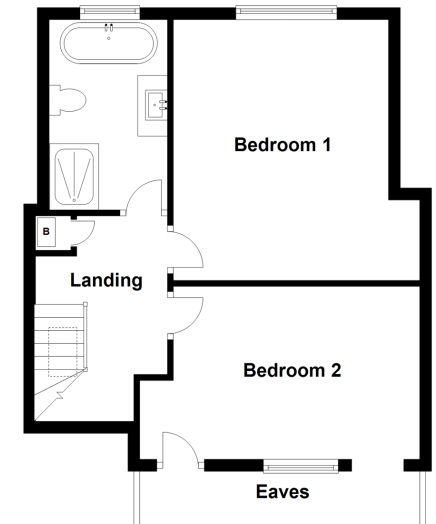
Split Level Ground Floor

Approx. 71.4 sq. metres (769.0 sq. feet)



First Floor

Approx. 43.9 sq. metres (472.2 sq. feet)



Call Billericay - 01277 631377 ■ douglasallen.co.uk

- Legal advice should be taken to verify fixtures/fittings, planning, alterations and/or lease details
- Our Homewise partnership offer a 'Home for Life' plan to buyers over 60, granting a lifetime lease for your protection and reducing the purchase price by up to 59%

- Appliances & services are untested, dimensions are approximate and floor plans are not to scale