



Price
£500,000

Freehold

4x  2x  1x 

**Coach Mews, Billericay,
Essex, CM11**

OVER 60?

Secure this property
for up to **59% less!**

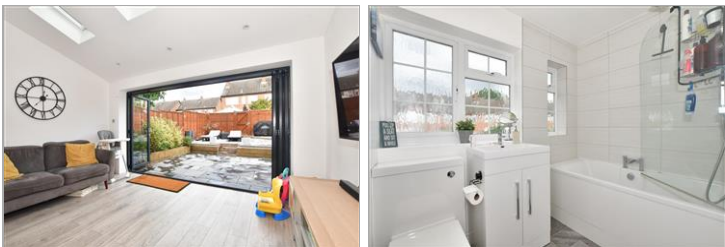


Video Tour available



**DOUGLAS
ALLEN**

Helping you move forwards



Main features

- Quiet walk way location in the popular **Bridles Development**
- Well presented throughout with modern kitchen/diner
- En bloc garage
- Catchment for local desirable schools
- Short walk to local shops and close to **Stock Brook Manor Country Club**

Accommodation

GROUND FLOOR

Entrance Hall
Lounge: 13'11 x 12'7 (4.24m x 3.84m)
Kitchen/Diner: 20'5 x 15'11 (6.23m x 4.85m)

FIRST FLOOR

Landing
Bedroom Two: 15'0 x 9'3 (4.58m x 2.82m)
Bedroom Three: 9'11 x 7'8 (3.02m x 2.34m)
Bedroom Four: 7'3 x 6'6 (2.21m x 1.98m)
Bathroom: 7'1 x 5'4 (2.16m x 1.63m)

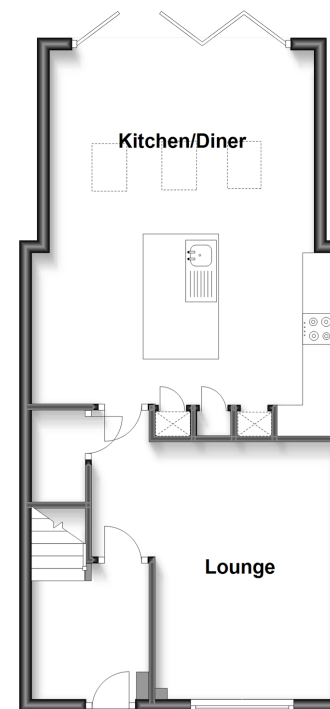
SECOND FLOOR

Bedroom One: 18'11 x 11'11 (5.77m x 3.63m)
En Suite: 6'5 x 5'3 (1.96m x 1.60m)

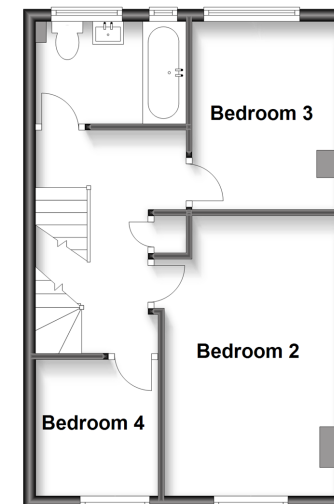
OUTSIDE

En bloc garage
Rear garden

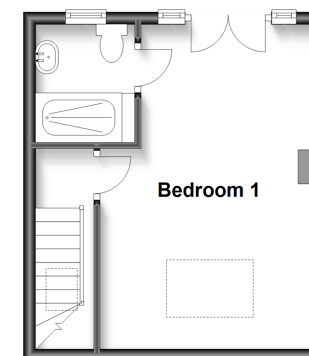
Ground Floor
Approx. 49.4 sq. metres (531.5 sq. feet)



First Floor
Approx. 37.6 sq. metres (404.5 sq. feet)



Second Floor
Approx. 23.9 sq. metres (257.2 sq. feet)



Call Billericay - 01277 631377 ■ douglasallen.co.uk

- Legal advice should be taken to verify fixtures/fittings, planning, alterations and/or lease details
- Appliances & services are untested, dimensions are approximate and floor plans are not to scale
- Through a Homewise Home For Life Plan people aged 60+ can secure this property for up to 59% less, by purchasing a Lifetime Lease.



50312843/20220928/DL/DL