



Price
£575,000

Freehold

4x  1x  2x 

**Winchester Gardens,
Steeple View, Essex,
SS15**

OVER 60?

Secure this property
for up to **59% less!**



Video Tour available



**DOUGLAS
ALLEN**

Helping you move forwards



Main features

- Detached home situated in a quiet cul de sac location
- In immaculate condition throughout and must be seen
- Garage and off road parking
- Situated on a large corner plot
- Close to local shops and access to the A127

Accommodation

GROUND FLOOR

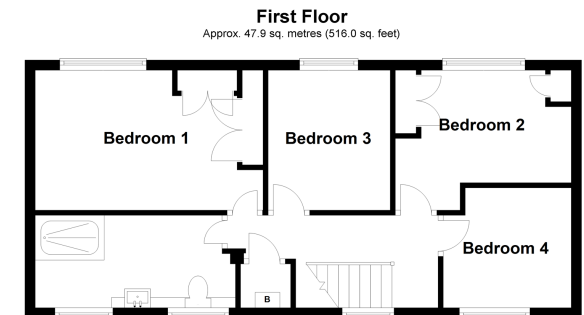
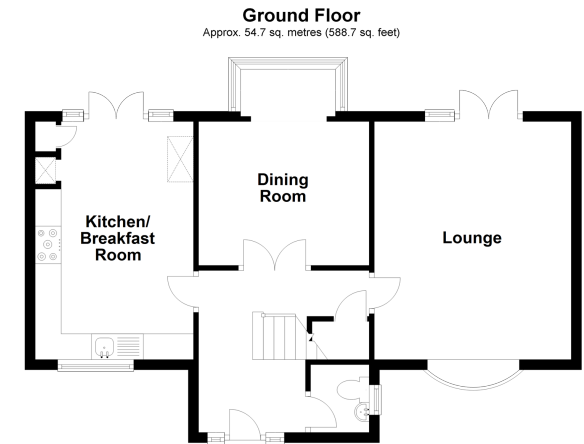
Entrance Hall
 Lounge: 15'1 x 12'0 (4.60m x 3.66m)
 Kitchen/Breakfast Room: 15'9 x 10'0 (4.80m x 3.05m)
 Dining Room: 10'10 x 9'2 (3.30m x 2.80m)
 Cloakroom

FIRST FLOOR

Landing
 Bedroom 1: 12'7 x 8'11 (3.84m x 2.72m)
 Bedroom 2: 8'11 x 7'8 (2.72m x 2.34m)
 Bedroom 3: 11'8 x 7'2 (3.56m x 2.19m)
 Bedroom 4: 8'11 x 7'8 into fitted wardrobes (2.72m x 2.34m)
 Shower Room

OUTSIDE

Driveway
 Garage
 Rear Garden corner plot



Call Billericay - 01277 631377 ■ douglasallen.co.uk

■ Legal advice should be taken to verify fixtures/fittings, planning, alterations and/or lease details
 ■ Through a Homewise Home For Life Plan people aged 60+ can secure this property for up to 59% less, by purchasing a Lifetime Lease.

■ Appliances & services are untested, dimensions are approximate and floor plans are not to scale

