

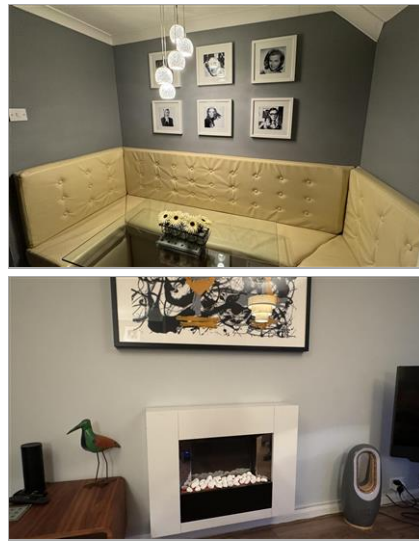


Price
£400,000

Freehold

3x  1x  1x 

**Foremark Close, Ilford,
Essex, IG6**



Main features

- **3 bedroom terraced house**
- **No onward chain**
- **Well presented throughout**
- **Close to nearby amenities including local high street**
- **Less than a mile to Grange Hill Central Line Train Station**



Nearest Schools

Primary Schools: Manford Primary 0.0 miles, John Bramston Primary 0.3 miles, Coppice Primary 0.6 miles

Secondary Schools: Hainault Forest High School 0.6 miles, The New Rush Hall School 0.8 miles, King Solomon High School 1.1 miles



Transport Information

Train Stations: Goodmayes 3.6 miles, Chadwell Heath 3.7 miles, Chingford 4.3 miles
Underground Grange Hill 0.8 miles, Hainault 0.9 miles, Barkingside 1.5 miles
DLR.: Pudding Mill Lane 7.0 miles, Royal Albert 7.2 miles

Accommodation

GROUND FLOOR

Entrance Hall

Lounge: 14'8 x 11'6 (4.47m x 3.51m) plus 3'2 x 7'7 (0.97m x 2.31m)

Kitchen: 13'5 x 8'4 (4.09m x 2.54m)

FIRST FLOOR

Landing

Bedroom 1: 14'3 x 8'6 (4.35m x 2.59m)

Bedroom 2: 10'2 x 6'5 (3.10m x 1.96m)

Bedroom 3: 11'2 x 6'11 (3.41m x 2.11m)

Bathroom

Separate Toilet

OUTSIDE

Front and Rear Garden

Call Barkingside - 020 8551 4025 ■ douglasallen.co.uk

- A private rental licensing scheme applies to some properties in this area, please contact us before proceeding
- Appliances & services are untested, dimensions are approximate and floor plans are not to scale

- Legal advice should be taken to verify fixtures/fittings, planning, alterations and/or lease details