



**Price**

**£850,000**

**Freehold**

4x  3x  3x 

**Stradbroke Grove,  
Clayhall, Ilford, Essex,  
IG5**

 **DOUGLAS  
ALLEN**  
Helping you move forwards





## Main features

- Four bedroom semi detached house
- Corner plot
- En-suite to master bedroom
- Garage and off-street parking
- Beal High School catchment area

## Accommodation

### GROUND FLOOR

Porch  
 Entrance hall  
 Lounge/dining room : 23'0 x 11'0 (7.02m x 3.36m)  
 Play room: 18'9 x 10'9 (5.72m x 3.28m)  
 Kitchen: 18'0 x 9'0 (5.49m x 2.75m)  
 Cloak room

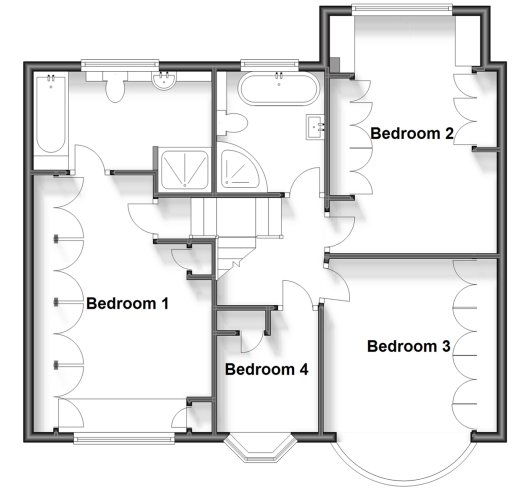
### FIRST FLOOR

Landing  
 Bedroom 1 : 16'6 x 9'11 (5.03m x 3.02m)  
 En suite  
 Bedroom 2: 15'9 x 10'8 (4.80m x 3.25m)  
 Bedroom 3: 11'5 x 9'11 (3.48m x 3.02m)  
 Bedroom 4: 9'11 x 8'0 (3.02m x 2.44m)  
 Bathroom

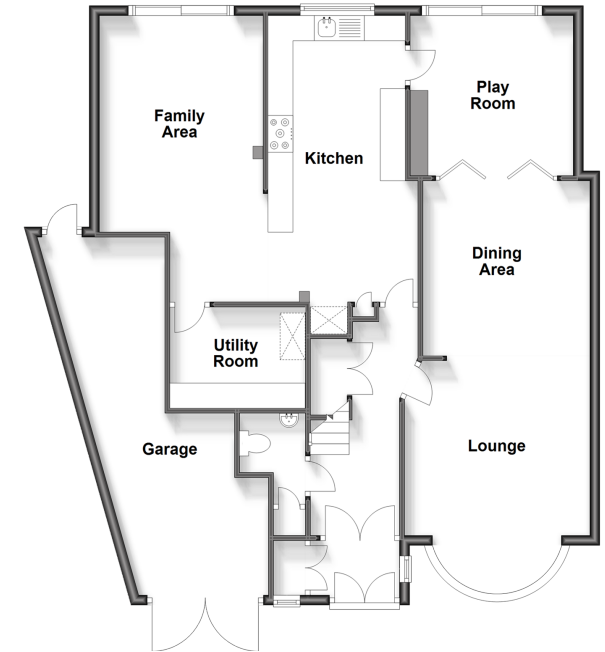
### OUTSIDE

Rear garden  
 Off street parking  
 Garage

**First Floor**  
 Approx. 70.4 sq. metres (757.6 sq. feet)



**Ground Floor**  
 Approx. 88.0 sq. metres (947.5 sq. feet)



**Call Barkingside - 020 8551 4025 ■ [douglasallen.co.uk](http://douglasallen.co.uk)**

- A private rental licensing scheme applies to some properties in this area, please contact us before proceeding
- Legal advice should be taken to verify fixtures/fittings, planning, alterations and/or lease details
- Appliances & services are untested, dimensions are approximate and floor plans are not to scale



50216174/20230902/ME/MS