



Price
£315,000

Leasehold

3x  1x  1x 

**Mossford Court, Hatfield
Close, Ilford, Essex, IG6**

OVER 60?

You could get up to
59% off the price!*



Video Tour available



**DOUGLAS
ALLEN**

Helping you move forwards



Main features

- Large ground floor Flat with outside storage
- 12 minutes' walk to Barkingside Central line station
- Quick access to Barkingside High Street & Tesco Supermarket
- Great schools including Mossford Green, Primary, Avanti Court Primary, & Ilford County HS

Accommodation

GROUND FLOOR FLAT

Entrance hall

Lounge /dinner: 15'8 x 11'2 (4.78m x 3.41m)

Kitchen/breakfast room : 13'6 x 8'7 (4.12m x 2.62m)

Bedroom 1 : 14'10 x 9'4 (4.52m x 2.85m)

Bedroom 2: 10'0 x 9'4 (3.05m x 2.85m)

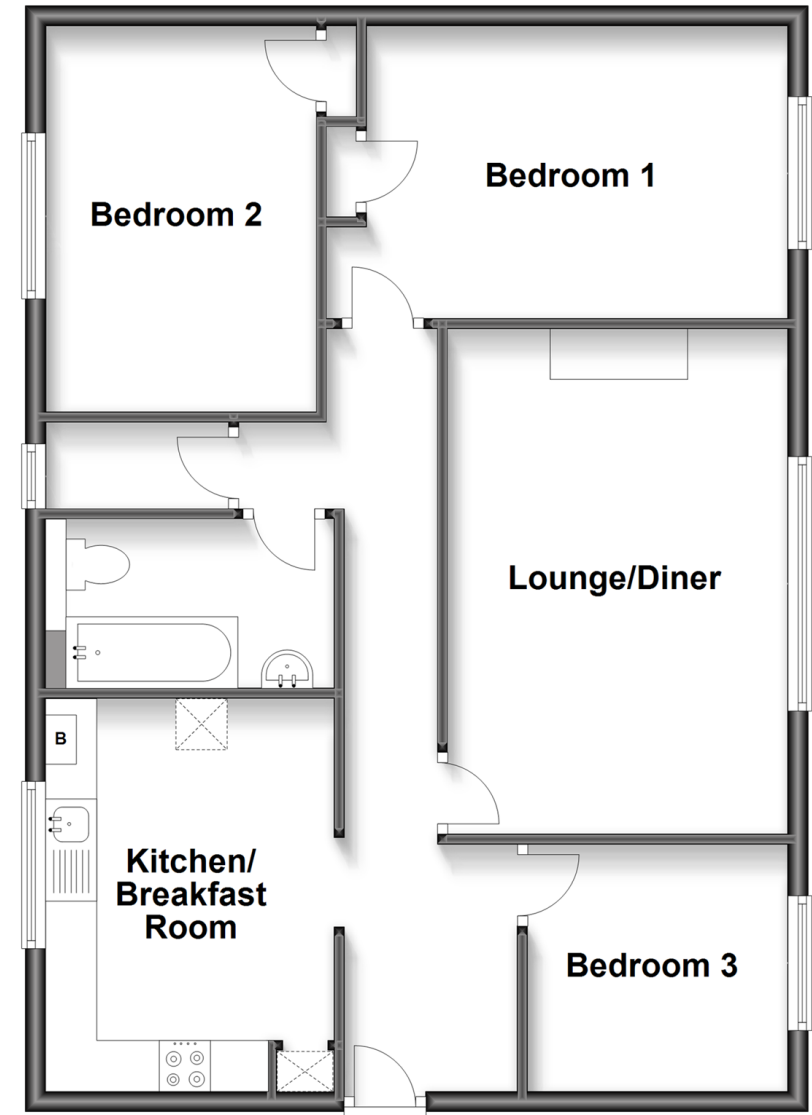
Bedroom 3: 12'2 x 8'2 (3.71m x 2.49m)

OUTSIDE

Communal garden

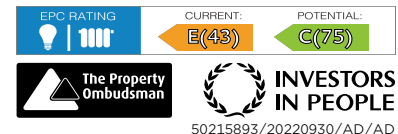
Ground Floor

Approx. 75.6 sq. metres (813.9 sq. feet)



Call Barkingside - 020 8551 4025 ■ douglasallen.co.uk

- A private rental licensing scheme applies to some properties in this area, please contact us before proceeding
- Legal advice should be taken to verify fixtures/fittings, planning, alterations and/or lease details
- Appliances & services are untested, dimensions are approximate and floor plans are not to scale
- Our Homewise partnership offer a 'Home for Life' plan to buyers over 60, granting a lifetime lease for your protection and reducing the purchase price by up to 59%



50215893/20220930/AD/AD