



**Price**

**£1,000,000**

**Freehold**

5x  3x  3x 

**Wincanton Gardens,  
Barkingside, Ilford,  
Essex, IG6**

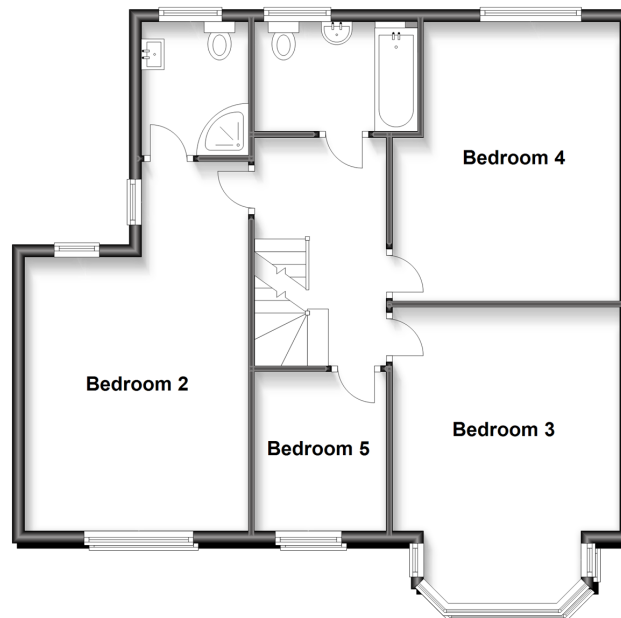
### Ground Floor

Approx: 947 sq. metres (10159 sq. feet)



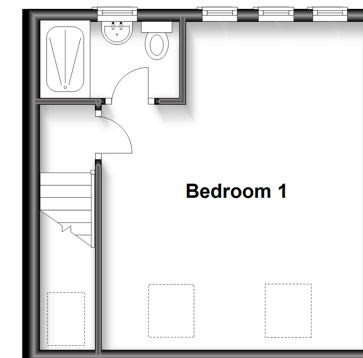
### First Floor

Approx: 754 sq. metres (8119 sq. feet)



### Second Floor

Approx: 285 sq. metres (3066 sq. feet)



## Accommodation

### GROUND FLOOR

Hallway

Lounge / Dining Area: 26'4 (8.03m) x 21'4 (6.51m) narrowing to 15'6 at narrowest point (4.73m)

Family Area: 15'0 x 13'5 (4.58m x 4.09m)

Kitchen: 21'5 x 12'2 (6.53m x 3.71m)

Cloakroom

### FIRST FLOOR

Landing

Bedroom 2: 19'0 x 12'0 (5.80m x 3.66m)

En-Suite Shower Room

Bedroom 3: 15'7 x 12'3 (4.75m x 3.74m)

Bedroom 4: 15'2 x 11'9 (4.63m x 3.58m)

Bedroom 5: 8'9 x 7'9 (2.67m x 2.36m)

Bathroom

### SECOND FLOOR

Landing

Bedroom 1: 17'5 x 14'0 (5.31m x 4.27m)

En-Suite Bathroom

### OUTSIDE

Off Road Parking

Rear Garden





## Main features

- Immaculate & stunning large semi detached family residence
- Extra large double bedrooms
- Sweeping open plan layout across the entire ground floor
- Gated parking for up to four cars
- Excellent Junior and Senior Schools nearby and close to High Street and supermarkets



### Nearest Schools

Primary Schools: Mossford Green Primary 0.2 miles, Gilbert Colvin Primary 0.3 miles, Clore Tikva School 0.3 miles

Secondary Schools: Ilford County High School 0.1 miles,



### Transport Information

Underground Fairlop 1.0 miles, Barkingside 1.0 miles, Redbridge 1.5 miles

Train Stations: Ilford 2.8 miles, Woodgrange Park 3.2 miles, Wood Street 3.2 miles



Wincanton Gardens, Barkingside, Ilford, Essex, IG6



### Directions

For directions to this property please contact us.





Call Barkingside Branch 020 8551 4025 ■ [douglasallen.co.uk](https://douglasallen.co.uk)



- A private rental licensing scheme applies to some properties in this area, please contact us before proceeding
- Appliances & services are untested, dimensions are approximate and floor plans are not to scale

- Legal advice should be taken to verify fixtures/fittings, planning, alterations and/or lease details



50215480/20230429/ME/AD