



Price

£230,000

Leasehold

1x  1x  1x 

**Pershore Close, Ilford,
Essex, IG2**



Main features

- Chain-free 1 bedroom flat
- Communal parking facilities
- Ideal for first time buyers
- Ideally situated in the catchment area of Redbridge Primary School and Oaks Park Secondary School
- Within walking distance to Gants Hill Station and Newbury Park Station

Accommodation

FIRST FLOOR

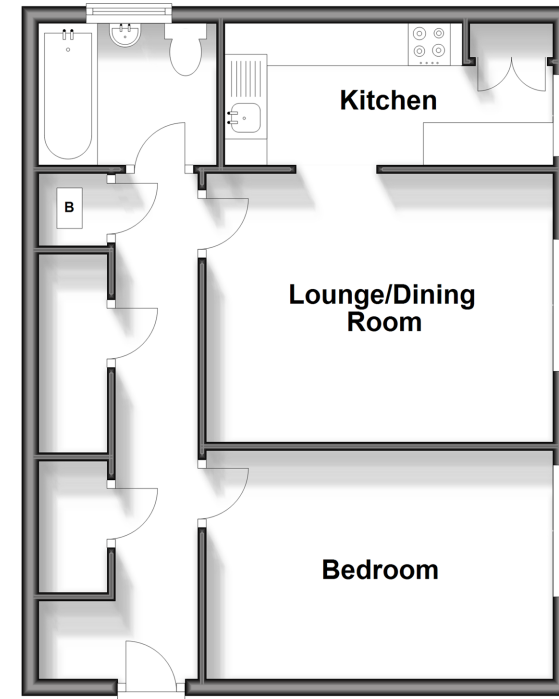
Entrance Hall
 Lounge/Dining Room: 17'8 x 14'1 (5.39m x 4.30m)
 Kitchen: 16'5 x 5'8 (5.01m x 1.73m)
 Bedroom: 14'5 x 14'5 (4.40m x 4.40m)
 Bathroom

OUTSIDE

Communal Gardens

First Floor

Approx. 47.3 sq. metres (509.5 sq. feet)



Call Barkingside - 020 8551 4025 ■ douglasallen.co.uk

- A private rental licensing scheme applies to some properties in this area, please contact us before proceeding
- Legal advice should be taken to verify fixtures/fittings, planning, alterations and/or lease details
- Appliances & services are untested, dimensions are approximate and floor plans are not to scale



50214746/20240402/LA/RUM