



Price

£350,000

Leasehold

3x  1x  1x 

**Mossford Court, Hatfield
Close, Ilford, Essex, IG6**



Main features

- 1st floor 3-bedroom flat
- Within 1 mile of 2 central line stations with services running directly into Liverpool Street
- Gas central heating
- Close to high street amenities
- Perfect for First time buyers or investors

Accommodation

FIRST FLOOR

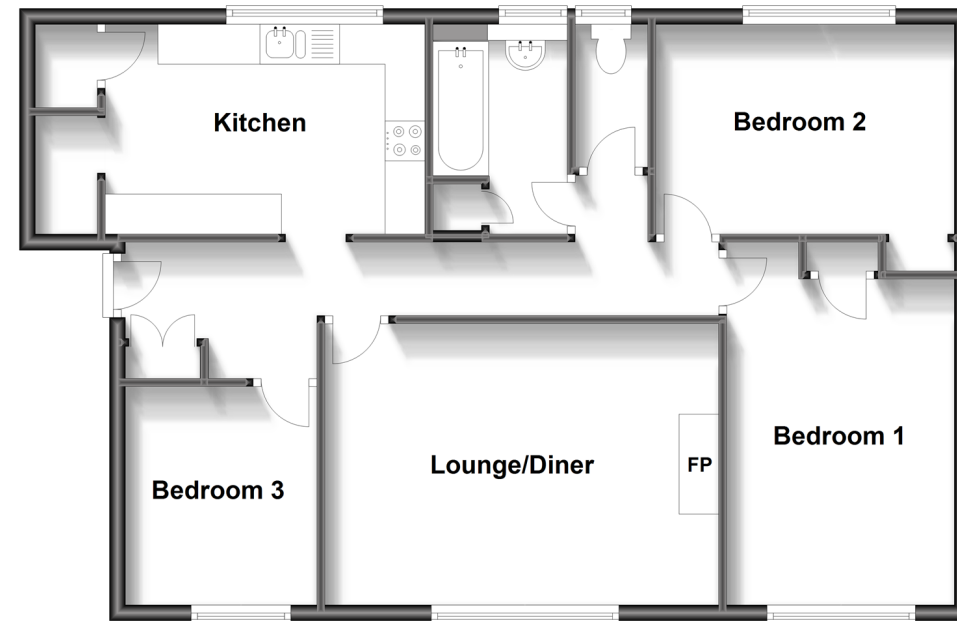
Entrance hall
 Kitchen: 13'1 x 8'6 (3.99m x 2.59m)
 Lounge/dinner: 16'2 x 11'5 (4.93m x 3.48m)
 Cloak room
 Bedroom 1: 14'9 x 9'3 (4.50m x 2.82m)
 Bedroom 2: 15'8 x 8'6 (4.78m x 2.59m)
 Bedroom 3: 8'7 x 8'7 (2.62m x 2.62m)
 Bathroom

OUTSIDE

Communal garden
 Off street parking

First Floor

Approx. 78.7 sq. metres (846.7 sq. feet)



Call Barkingside - 020 8551 4025 ■ douglasallen.co.uk

- A private rental licensing scheme applies to some properties in this area, please contact us before proceeding
- Legal advice should be taken to verify fixtures/fittings, planning, alterations and/or lease details
- Appliances & services are untested, dimensions are approximate and floor plans are not to scale



50212289/20230627/ME/MS